



ECO2

Powerful and Affordable B&W system



CHISON
Value Beyond Imaging

Advanced Imaging Technologies



Ergonomics

- Rotatable LED (0~30°) : tailor to different viewing angles
- Ultra-compact & Ultra-light
- Easy to carry
- Keyboard : For easy and quick access
- Dedicated cart TR 9000
- Streamlined workflow

ECHO

- Advanced technologies:
 - i-Image(Intelligent image optimization)
 - THI(Tissue Harmonic Image)
 - SRA(Speckle Reduction Algorithm)
 - Compound imaging
- Full digital beam-former
- Trapezoid
- Automatic PW trace
- Chroma
- Full screen display mode
- AIO(Automatic image optimization)

Economic

- The latest platform & more advanced chip-set:brings you better image quality and features at less cost in a more compact box
- Support PC printer, reduce investment & day to day paper cost
- 8G memory card
- 500G harddisk (option)
- Vehicular Charging

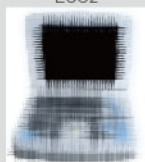
ECO-friendly

- Less radiation
- Less power consumption
- Longer usage life:LED
- Longer battery >2.5 hours

Support PC Printer



ECO2



Traditional Ultrasound

Connect PC Printer



PC Printer

A4 Paper



Benefits

- PC printer is less expensive than video printer
- A4 paper saves more cost than thermal paper for everyday use
- Detail report can be printed (with images, measurement results, patient information)

Connect Video Printer

Can ONLY Use Video Printer



Video Printer

Thermal Paper



- More expensive
- Can ONLY print images

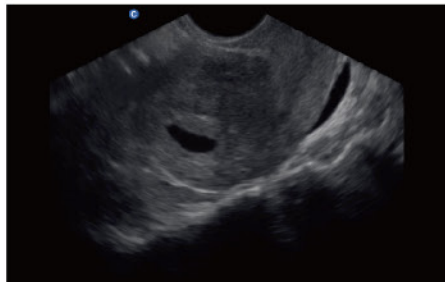
Excellent PW

resolution and automatic
PW trace measurement will greatly improve the diagnosis confidence
by delivering both qualitative & quantitative results.

Great image quality



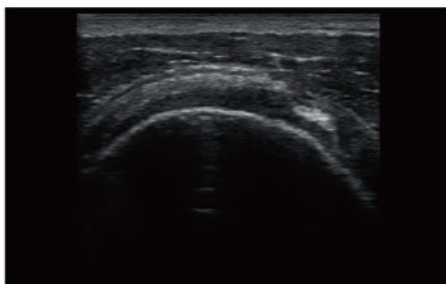
Median Sagittal Section, B Mode



Early Pregnancy, B Mode



Kidney, B Mode



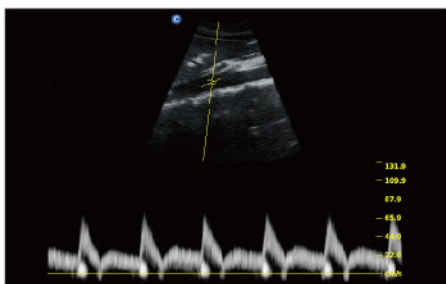
Subscapularis Tendon, B Mode



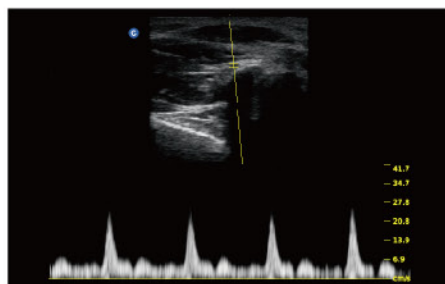
Thyroid, B Mode



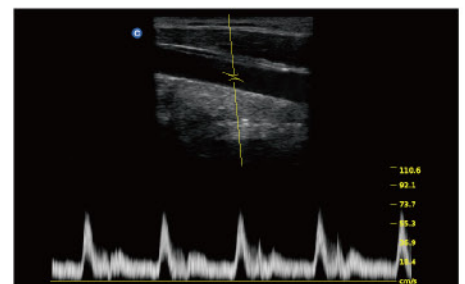
Gallbladder, B Mode



Aorta Artery, PW Mode



Thumb Artery, PW Mode



Carotid, PW Mode

Specifications

| | |
|------------------------|--|
| Applications | Abdomen,OB/GYN,Vascular, Small parts(breast, testicles, thyroid),Musculoskeletal Conventional & Superficial, Pediatrics, Basic Cardiac |
| Imaging technologies | i-Image,Compound imaging,SRA,THI |
| Display Modes | B, B/B, 4B, M, B/M,PW |
| Gray Scale | 256 Levels |
| Scanning Depth | 240mm Max (depend on the probe types) |
| Probe Frequency | 2.5 MHz - 11.0 MHz (Depend on the probe) |
| Cine Loop | 256 frames |
| Zoom | 4 steps |
| Software Packages | Dedicated measurement package: General ,OB/GYN, URO , Cardiac, Vascular, Small parts |
| Archives Management | Patient information management, images record, exam report. |
| Power Supply | AC 100V-240V, 50Hz- 60Hz |
| Standard Configuration | 1 probe connector, 3 USB ports,VGA port,Video port, LAN port, Full Screen Display Mode, i-Image,Chroma, SRA, Compound imaging,THI, 8G memory card, PW Mode |
| Option | 2 probe connectors, DICOM, Water-proof keyboard cover, Carrying Case (BG-100), Cart TR 9000, Support PC Printer, Video Printer, Built-in Battery |



2.5MHz-5.0MHz Convex
C3-A



5.3MHz-10.0MHz Linear
L7M-A



5.3MHz-11.0MHz Linear
L7S-A



2.5MHz-5.0MHz Micro-Convex
MC3-A



5.0MHz-10.0MHz Trans-Rectal
R7-A



4.5MHz-8.0MHz Transvaginal
V6-A



4.5MHz-8.0MHz Micro-Convex
MC6-A

CHISON Medical Technologies Co., Ltd.

Sales & Service Contact Address:

No.9, Xinhuihuan Road, Xinwu District, Wuxi, Jiangsu, China 214028

TEL : 0086-510-85310593 / 85310937

FAX : 0086-510-85310726

EMAIL : export@chison.com.cn

We reserve the right to make changes to this catalogue without prior notice.
Please contact us or your local dealer for the latest information.
*Please refer to the user manual for details.

ECO2-20161025