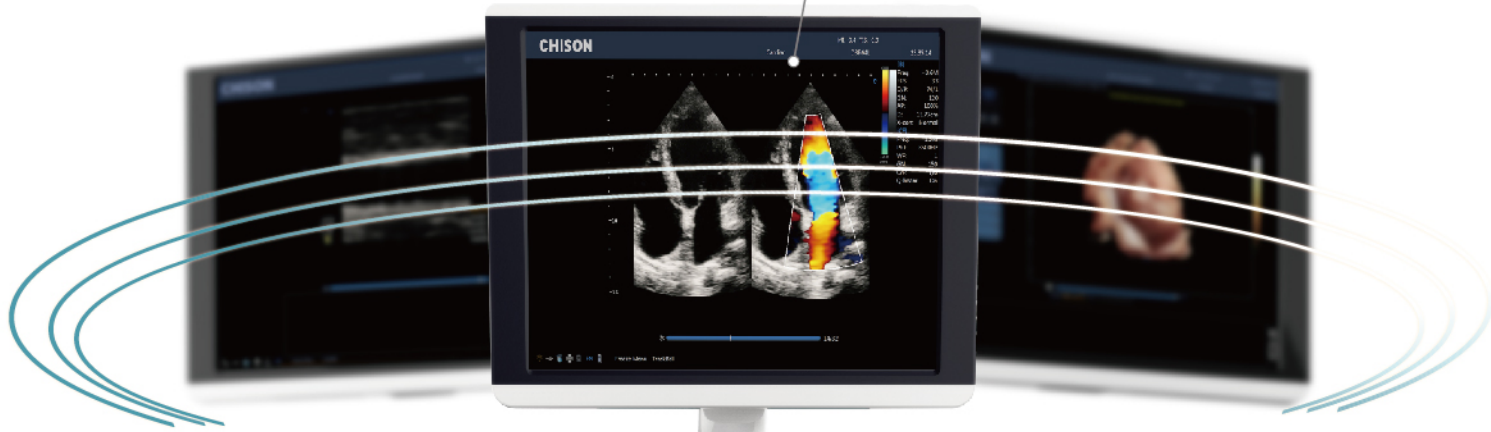




 **Bit 6**
Experts within Touch

Industry-leading Design

19 inch HD LED monitor
Rotatable: $\pm 90^\circ$



Gel warmer (optional)
Temperature adjustable



Elegant Control Panel



Dedicated video printer socket

Facing front CD/DVD recorder

Built-in Battery (optional)



Four probe connectors



Smart Standby Mode

- Smart backstage management enables extended battery life
- Instant power-on



Dual-screen display for better view

Easy to slide

DUAL SCREEN DISPLAY

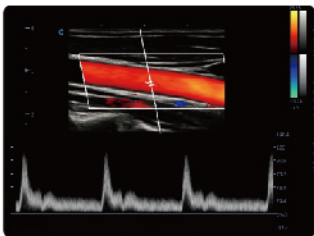


SUPERIOR WORKFLOW



► Intelligent Focus

- Automatically detect the focus position according to the depth
- Focus on the interesting area to improve the quality
- Efficient and intelligent



► Intelligent Doppler (Optional)

- Automatically adjust the ROI direction and PFR in color mode and doppler gate in PW mode
- Saving time, Efficiency
- Much easier for the sonographer



► Raw data

- Provide the freedom to perform image adjustments;
- Speedy scanning time, save the processing time
- Efficiency and fast

19 inch HD LED monitor



- 90% image area
- full screen function, deliver the large image;

10.1 inch HD touch panel

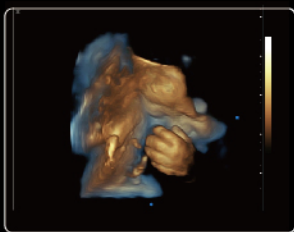


- Super responsive
- Ergonomic tilting ensures all-dimensional, multi-angle visualization;
- Customized layout, just one-touch operation ease of use.

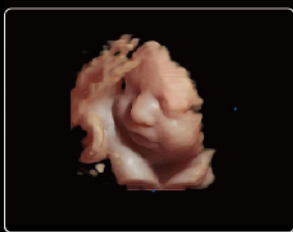
Advanced Tools for Optimized Healthcare



4D



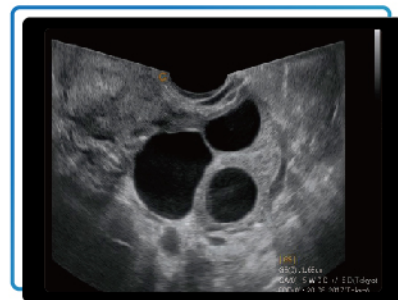
Depth View



Virtual HD

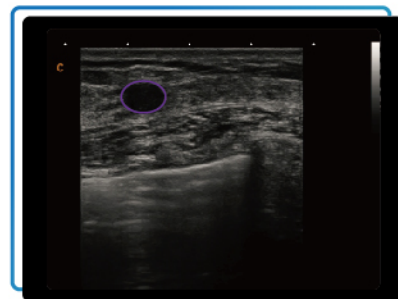
► Wide angle TV probe

- Up to 210° extremely wide angle
- Provide more diagnostic information
- Save time, improve the efficiency



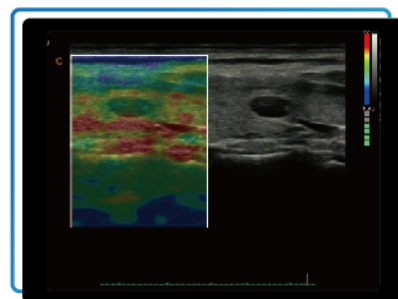
► Auto Breast Lesion Detection

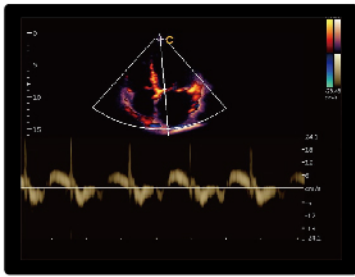
- Automatically detect breast lesion
- Provide the size
- Efficient for the diagnosis



► Quantitative Elastography

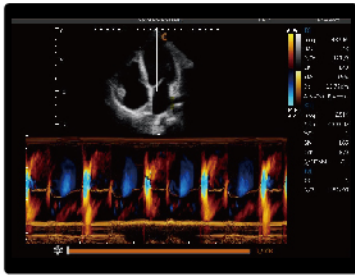
- Display the elasticity of different tissues in different color
- Provide more clinical information , especially for breast tumor, thyroid ,liver and prostate
- Strain ratio measurement quantitatively gives the ratio between the average strain of the selected region and of the nearby normal tissue region.
- Available on versatile transducers.





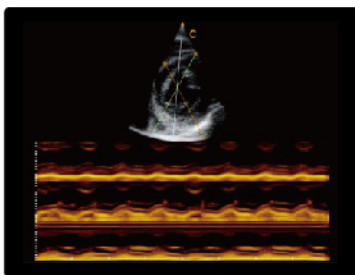
TDI

- Tissue Doppler imaging is a novel echocardiography technique that directly measures myocardial velocity.
- Systolic TD measurements assess left and right ventricular myocardial contractile function. Diastolic TD values reflect myocardial relaxation.



Color M

- Provide cardiac movement information efficiently
- Display corresponding blood flow direction information
- Easy to detect regurgitation



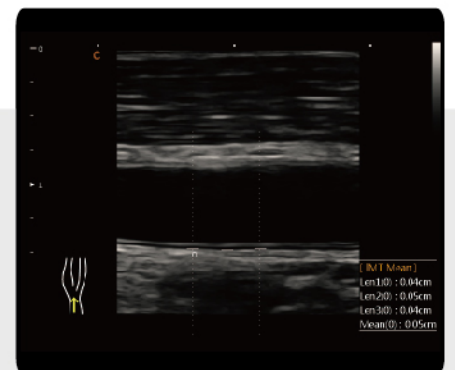
Free Steering M Mode

- Obtain accurate cardiac function analysis data.
- Obtain accurate cardiac measurement parameters of any section and any Angle
- Excellent and convenient for difficult patient examination



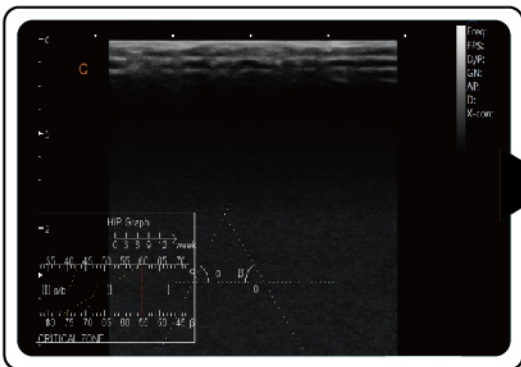
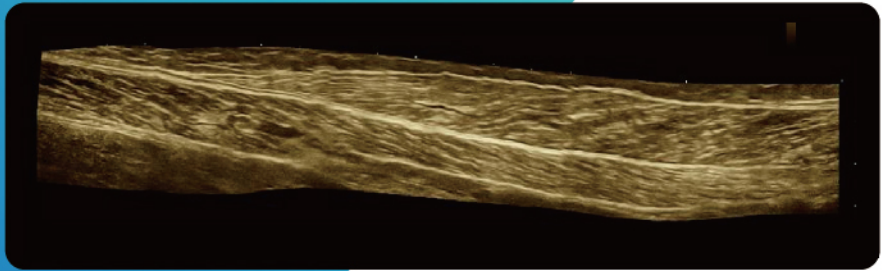
Auto IMT

Automatically traces the intima, and measures the thickness of the intima. This allows you to measure the intima faster, more easily and more accurately.



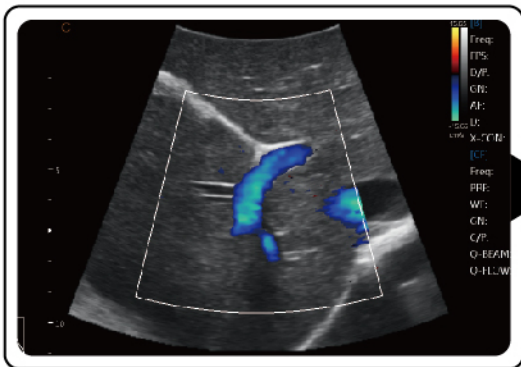


Real Time Panoramic ▶



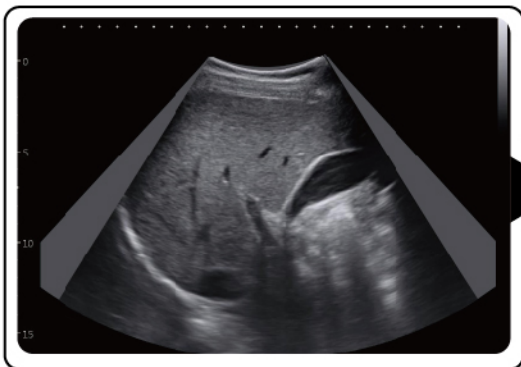
Smart HIP

- Use a graph for hip orthotics diagnosis, help clinicians to give a more easier and more accurate diagnoses during the pediatric hip scanning.
- Different angles indicate different level of hip deformity, which is more easier and obvious to see with the aid of the graph. (I, II, D, IIIa, IIIb).



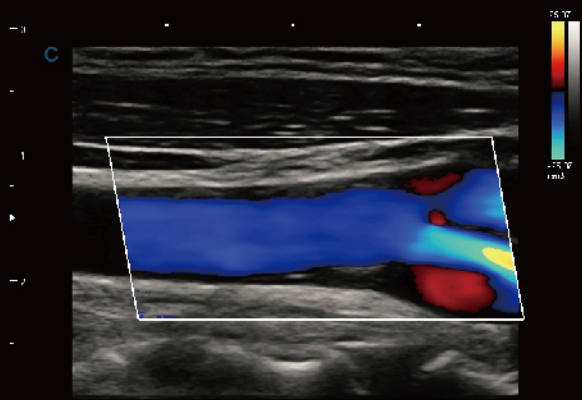
HD CZoom

- Zoom the color information, remain the high resolution
- Important for the small vessel blood information detection, especially for the fetal heart diagnosis.

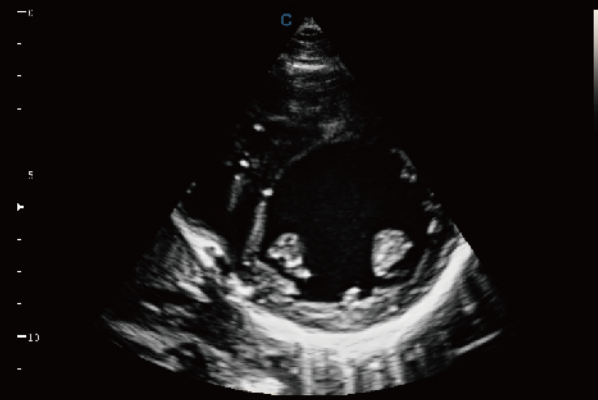


Virtual Convex

- Enlarge the scanning area in convex probe, same as convex trapezoid
- Better for the big organ display, especially liver, kidney through the rib space



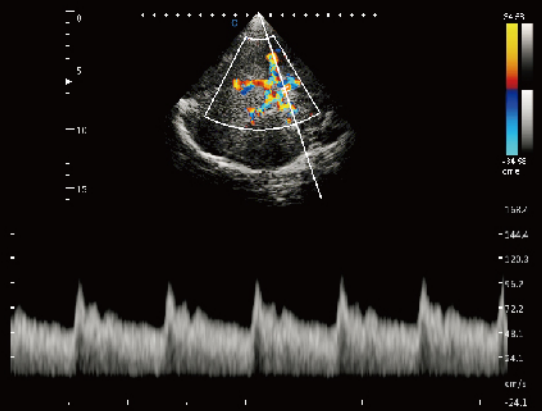
Carotid Plaque, C Mode



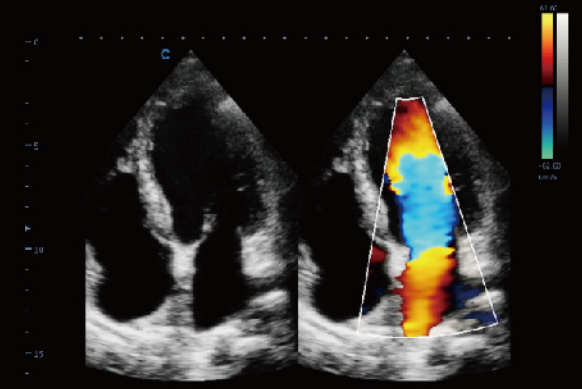
Papillary Short Axis View, B Mode



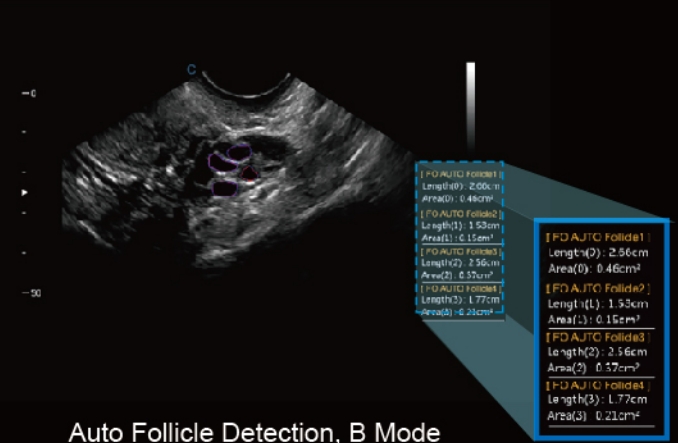
Fetal Face, Virtual HD



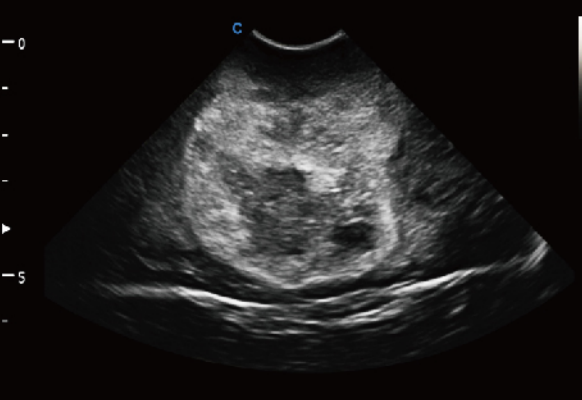
Transcranial, PW Mode



Four Chambers View, B/BC Mode



Auto Follicle Detection, B Mode



Pediatric Cerebral Tumor, B Mode



Hydronephrosis, B Mode



WIDE VARIETY OF TRANSDUCERS



2.0MHz-6.8MHz
Convex D3C60L



7.0MHz-18.0MHz
(With FHI) Linear D12L40L



4.0MHz-15.0MHz
Linear D7L40L



2.0MHz-6.8MHz
Volume V4C40L



4.0MHz-15.0MHz
Transvaginal D7C10L



4.0MHz-12.0MHz
Transvaginal D6C12L



1.5MHz-5.3MHz
Phased array D3P64L



2.0MHz-8.0MHz
Phased array D5P64L



2.0MHz-6.8MHz
Micro-Convex D3C20L



4.0MHz-12.0MHz
Micro-Convex D6C15L

CHISON Medical Technologies Co., Ltd.

Sales & Service Contact Address

No.9, Xinhuihuan Road, Xinwu District, Wuxi, Jiangsu, China 214028

TEL: 0086-510-85310937

FAX: 0086-510-85310726

EMAIL: export@chison.com.cn

We reserve the right to make changes to this catalogue without prior notice
Please contact our local dealer for the latest information.